



Beaufort County Public Works
Stormwater Infrastructure
Project Summary

Project Summary: Pinewood Circle

Project #: 2011-572 Completed: Oct-10

Narrative Description of Project:
 Project improved 6,298 L.F. of drainage system. Bush hogged and constructed 1,000 L.F. of outfall ditch and workshelf. Cleaned out 5,298 L.F. of outfall ditch. Installed (4) bleeder pipes and (1) access pipe. Repaired washouts. Installed straw mat, rip rap, handseeded and hydroseeded for erosion control.

Material Cost, Rental Equipment Summary, and Labor

Material	Unit	Cost/Unit	Qty	Cost
12" HDPE Pipe	linear feet	\$4.86	80.0	\$388.80
15" HDPE Pipe	linear feet	\$6.22	40.0	\$248.80
48" HDPE Pipe	linear feet	\$43.04	100.0	\$4,304.00
Fill Dirt	ton	\$1.00	487.8	\$487.83
Rip Rap	ton	\$43.87	41.0	\$1,798.67
#57 Stone	ton	\$47.00	6.8	\$321.01
Recycled Concrete	ton	\$1.00	7.1	\$7.09
Filter Blanket	sy	\$0.63	125.0	\$78.75
Silt Fence	sy	\$0.78	14.0	\$10.92
Turf Staple	each	\$0.03	190.0	\$5.70
10-10-10 Fertilizer	bag	\$11.72	4.0	\$46.88
Hydromulch	bale	\$12.22	8.0	\$97.76
Hydrogel	cup	\$2.82	4.0	\$11.28
Hydromax Liquid Fertilizer	cup	\$2.54	4.0	\$10.16
Annual Rye Grass Seed	bag	\$24.61	4.3	\$104.59
Brown Top Millet Grass Seed	bag	\$21.40	1.5	\$32.10
Water	gallon	\$0.01	2,000	\$20.00
Straw Mat	roll	\$26.75	2.0	\$53.50
Sediment Log	each	\$29.96	1.0	\$29.96
Marking Paint	each	\$4.44	2.0	\$8.88
Pin Flag	each	\$0.06	66.0	\$3.96
Flagging Tape	roll	\$1.34	1.3	\$1.68
4ft Flagger	each	\$0.34	10.0	\$3.40
Debris Disposal	ton	\$33.00	20.9	\$689.37
Debris Disposal	ton	\$17.00	7.7	\$130.22
Excavator Rental				\$3,407.79
Gas	gallon	\$2.49	89.0	\$221.61

Site Photographs

Before



During



After



Pinewood Circle Project Summary Con't

Project #: 2011-572

Material Cost, Rental Equipment Summary, and Labor

Material	Unit	Cost/Unit	Qty	Cost
Diesel	gallon	\$2.56	1,128	\$2,887.68
Labor	hours		1,290.5	\$27,925.07
Indirect Labor, Services, and Supplies				\$19,227.29
Total Cost of Materials, Rental Equip., and Labor				\$62,564.75

Note: Labor cost includes the employee's salary plus fringe benefits.

Equipment Cost

Item	Asset No.	Cost/Hour	Hrs.	Cost
Volvo 290 Excavator	22870	\$54.13	1.0	\$54.13
Volvo 330 Excavator	22993	\$59.32	1.0	\$59.32
CAT 325 Excavator	16649	\$22.84	34.3	\$783.41
Komatsu Mini Excavator	23000	\$14.90	5.0	\$74.50
New Holland Loader	19968	\$47.93	1.0	\$47.93
JD Loader 444J	23271	\$29.75	17.0	\$505.75
Bobcat T300	22847	\$17.40	14.0	\$243.60
Bobcat T320	23388	\$21.00	14.0	\$294.00
Bush Hog	22822	\$38.64	2.0	\$77.28
Bush Hog	20207	\$35.66	2.0	\$71.32
Lowboy	23118	\$34.64	4.5	\$155.88
Lowboy	23214	\$34.64	2.0	\$69.28
Hydroseeder	23474	\$12.44	5.0	\$62.20
Dump Trucks		\$13.31	285.0	\$3,793.35
Pickup Trucks		\$4.12	339.0	\$1,396.68
Total Equipment Cost				\$7,688.63

Cost/hour excludes fuel cost.

Total Cost: \$70,253.38

Site Photographs

Before



During



After



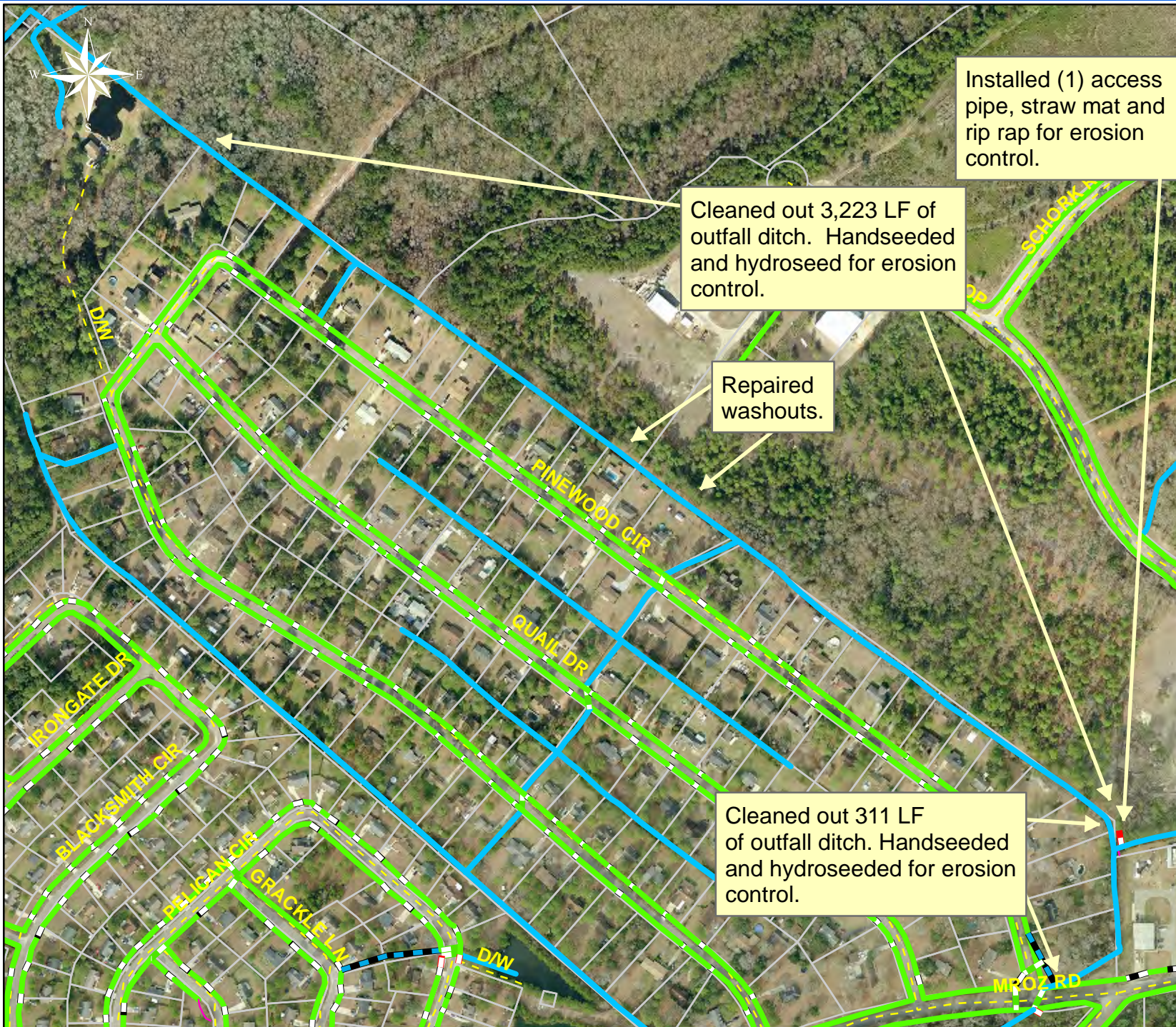
Project: Pinewood Circle Map 1

Activity: Drainage Maintenance

Project #: 2011-572

Township: Port Royal Island

Completed: October 2010



Legend

Drainage Type

- River
- Stream
- Outfall
- Lateral
- Lateral Pipe
- Roadside
- Roadside Pipe
- Crossline
- D/W
- Access
- Piped
- Bleeder
- Parcels

0 145 290 580 870 1,160 Feet

1 inch = 398 feet

Prepared By: BC Stormwater Management Utility

Date Print: 4/23/11

File:C:/sethdata/projects/projectmaps/Pinewood Cir 2011-572 Map1

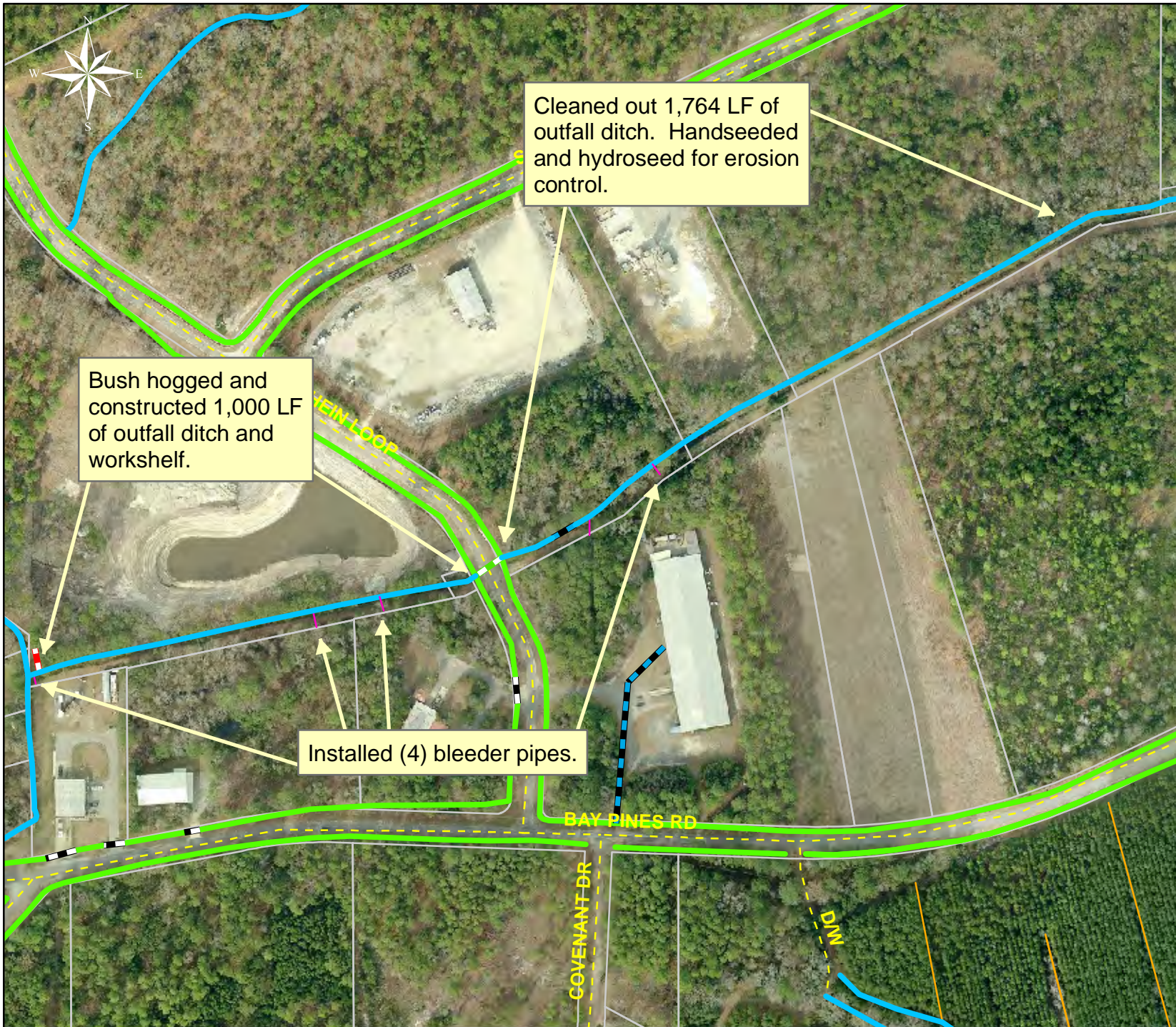
Project: Pinewood
Circle Map 2

Activity: Drainage
Maintenance

Project #:
2011-572

Township: Port
Royal Island

Completed:
October 2010



Legend

Drainage Type

- River
- Stream
- Outfall
- Lateral
- Lateral Pipe
- Roadside
- Roadside Pipe
- Crossline
- D/W
- Access
- Piped
- Bleeder
- Parcels



1 inch = 282 feet

Prepared By: BC Stormwater Management Utility

Date Print: 4/23/11

File: C:/sethdata/projects/projectmaps/Pinewood Cir 2011-572 Map2